

RealValidExam



Try before you buy

Download a free sample of any of our exam questions and answers

- ✓ 24/7 customer support, Secure shopping site
- ✓ Free One year updates to match real exam scenarios
- ✓ If you failed your exam after buying our products we will refund the full amount back to you.

Choose an exam to sample

Select a vendor... ▼

Select an exam... ▼

Your email address

 Download Now



QUALITY AND VALUE

RealValidExam Practice Exams are written to the highest standards of technical accuracy, using only certified subject matter experts and published authors for development - no all dumps.



TESTED AND APPROVED

We are committed to the process of vendor and third party approvals. We believe professionals and executives alike deserve the confidence of quality coverage these authorizations provide. anEdison



EASY TO PASS

If you prepare for the exams using our RealValidExam testing engine, It is easy to succeed for all certifications in the first attempt. You don't have to deal with all dumps or any free torrent / rapidshare all stuff.



TRY BEFORE BUY

RealValidExam offers free demo of each product. You can check out the interface, question quality and usability of our practice exams before you decide to buy.

<http://www.realvalidexam.com>

100% real and valid exam dumps can ensure you pass at the first attempt

Exam : **ECP-541**

Title : Ericsson Certified
GGSN-MPG and GPG
Professional

Vendor : Ericsson

Version : DEMO

NO.1 Which two statements are correct regarding QoS in an IP network using DiffServ?(Choose two.)

- A. High priority traffic can be dropped by any router in the network.
- B. Packets belonging to the same QoS class always traverse the same path regardless of IGP topology change.
- C. Routers reserve required bandwidth before they start forwarding packets for a given class.
- D. QoS procedures applied to a given traffic class are the same for all routers within the DiffServ domain.

Answer: A,D

NO.2 Which three techniques allow for the co-existence of IPv4 and IPv6 networks?

- A. tunneling
- B. anycasting
- C. translation
- D. encoding
- E. dual-stacking

Answer: B

NO.3 An edge router forwards a mixture of VoIP and IPTV traffic over the same port.

Which two QoS scheduling algorithms would you use to assure good VoIP call quality when the port is congested? (Choose two.)

- A. PQ
- B. WFQ
- C. PWFQ
- D. WRED

Answer: A,C

NO.4 Computer A with IP address 192.168.1.1/24 wants to send a packet to computer B with IP address 192.168.2.1/24. Which statement is correct?

- A. Computer A will send an ARP request to computer B
- B. Computer A will encode the destination MAC address of computer B
- C. Computer A will use its default gateway.
- D. Computer A will send a network discovery request to computer B

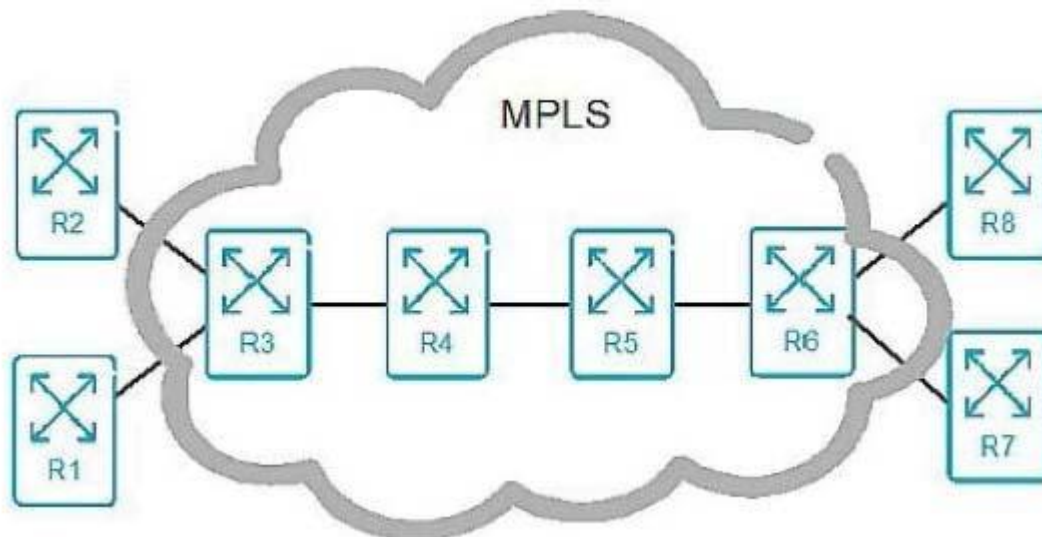
Answer: C

NO.5 Which two statements are correct about link-state routing protocols? (Choose two.)

- A. Packets are routed based upon the shortest path to the destination.
- B. Paths are chosen based upon the number of hops to the destination.
- C. The exchange of advertisement is triggered by a change in the network.
- D. In a multipoint network, all routers exchange routing tables directly with all the routers.

Answer: A,C

NO.6 Click the Exhibit button.



In the exhibit, which action is performed by router R4?

- A. pop
- B. swap
- C. PHP
- D. push

Answer: B

NO.7 What does TCP use to set up a connection?

- A. Two-way handshake
- B. Sliding window
- C. Three-way handshake
- D. Four-way handshake

Answer: C

NO.8 Why must the distance between two IP networks be less than 16 routers when using RIP as a routing protocol?

- A. RIP is a classful routing protocol.
- B. RIP converges too slowly.
- C. RIP uses a metric of 16 as infinite.
- D. RIP uses 16 seconds as a hold timer.

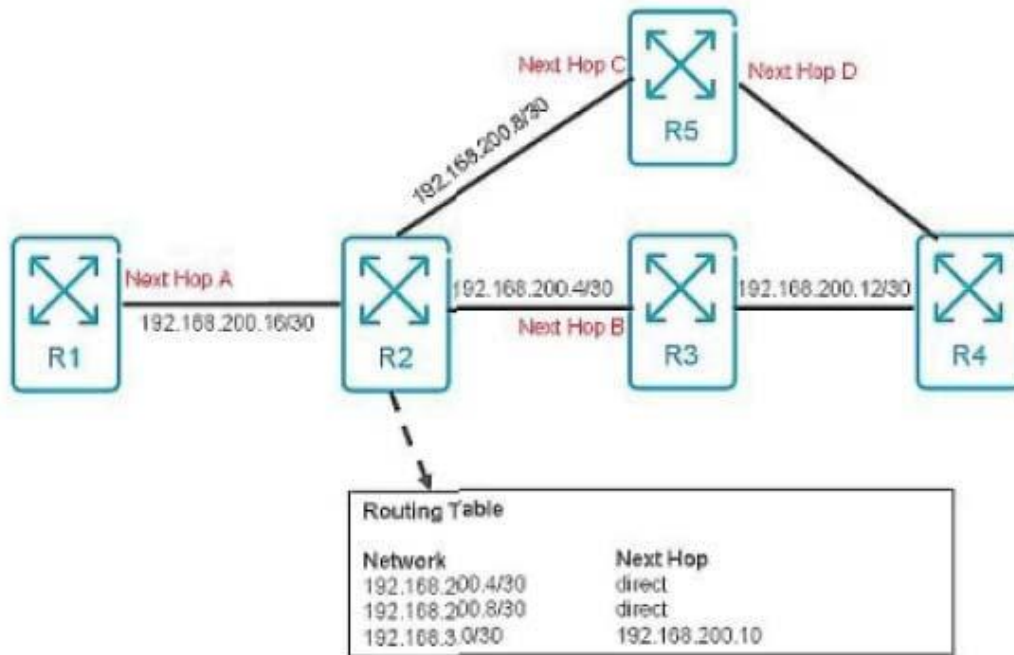
Answer: C

NO.9 IPv6 addresses can be classified into which three categories? (Choose three.)

- A. anycast
- B. broadcast
- C. multicast
- D. hexcast
- E. unicast

Answer: A,C,E

NO.10 Click the Exhibit button.



Referring to the exhibit, what is the next hop (A, B, C, or D) for traffic arriving at R2 and destination network 192.168.3.0?

- A. Next Hop A
- B. Next Hop B
- C. Next Hop C
- D. Next Hop D

Answer: C